



TEHRAN UNIVERSITY  
OF  
MEDICAL SCIENCES

# Pitfalls in odontogenic lesions and tumours: a practical guide

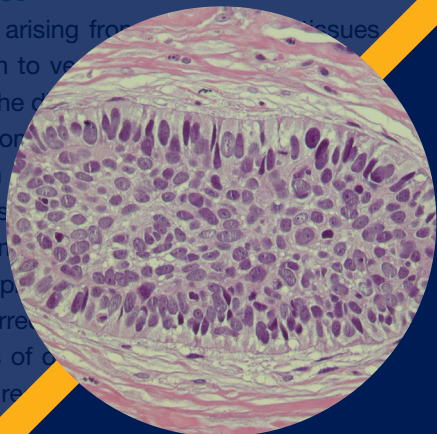
## 4<sup>th</sup> Oral & Maxillofacial Pathology

Online Journal Club



### Abstract

Lesions arising from odontogenic issues are common to various parts of the head and neck. This part of the course will focus on the diagnosis of lesions from histological specimens from the head and neck. The aim of this course is to help you (and your colleagues) to interpret the histology of the head and neck, and to help you in making a correct diagnosis. This course will cover a range of areas of the head and neck, and will provide an opportunity for you to help us to improve our teaching.



## “Pitfalls in odontogenic lesions and tumours: a practical guide”

Keith D Hunter, Sven Niklander

Epub Jan 2020

DOI: <https://doi.org/10.1016/j.mpdhp.2020.01.004>

July 11<sup>th</sup>  
**2022**

08:00 AM (GMT)

12:30 PM (Tehran)



### Moderators:

◆ **Nazanin Mahdavi, DDS**

Associate Professor and Head of Oral and Maxillofacial Pathology Department, TUMS, Iran



◆ **Pouyan Aminishakib, DDS**

Associate Professor, Cancer Institute Hospital, IKHC, TUMS, Iran



### Appraiser:

◆ **Masoumeh Mirkeshavarz, DDS**

Assistant Professor, Oral and Maxillofacial Pathology Department, ZUMS, Iran



### Keith Hunter

BSc (Hons), BDS, FDS RCSEd, PhD

Professor of Head and Neck Pathology

University of Liverpool

UK

**Author**

For Further Information and Registration, Click Here



**Click to join the meeting**

Meeting ID: 890 3516 7823

Passcode: Dentistry

<http://appraisetoraise.tums.ac.ir>

[dentistry\\_intl@tums.ac.ir](mailto:dentistry_intl@tums.ac.ir)

[support@appraisetoraise.com](mailto:support@appraisetoraise.com)

SCAN ME

